



Public Works

LOS ANGELES COUNTY

Alondra Park Multi-Benefit Stormwater Capture Project

Presented by: Lara Awad

Date: August 17, 2023

Alondra Park Multi-Benefit Stormwater Capture Project



Overview

The Project will construct a stormwater capture system at Alondra Park

- The project will implement multiple underground stormwater capture components
- Capturing runoff that will either be diverted into the sanitary sewer system or treated and released into the Dominguez Channel.
- Various above ground and recreational enhancements to be implemented at Alondra Park

Past Events

- April 4, 2019 – El Camino Community Meeting
- August 8, 2020 - Community Information Session
- April 20, 2023 – Alondra Park Preconstruction Meeting

Construction is anticipated to begin in Late November 2023

Project Partners

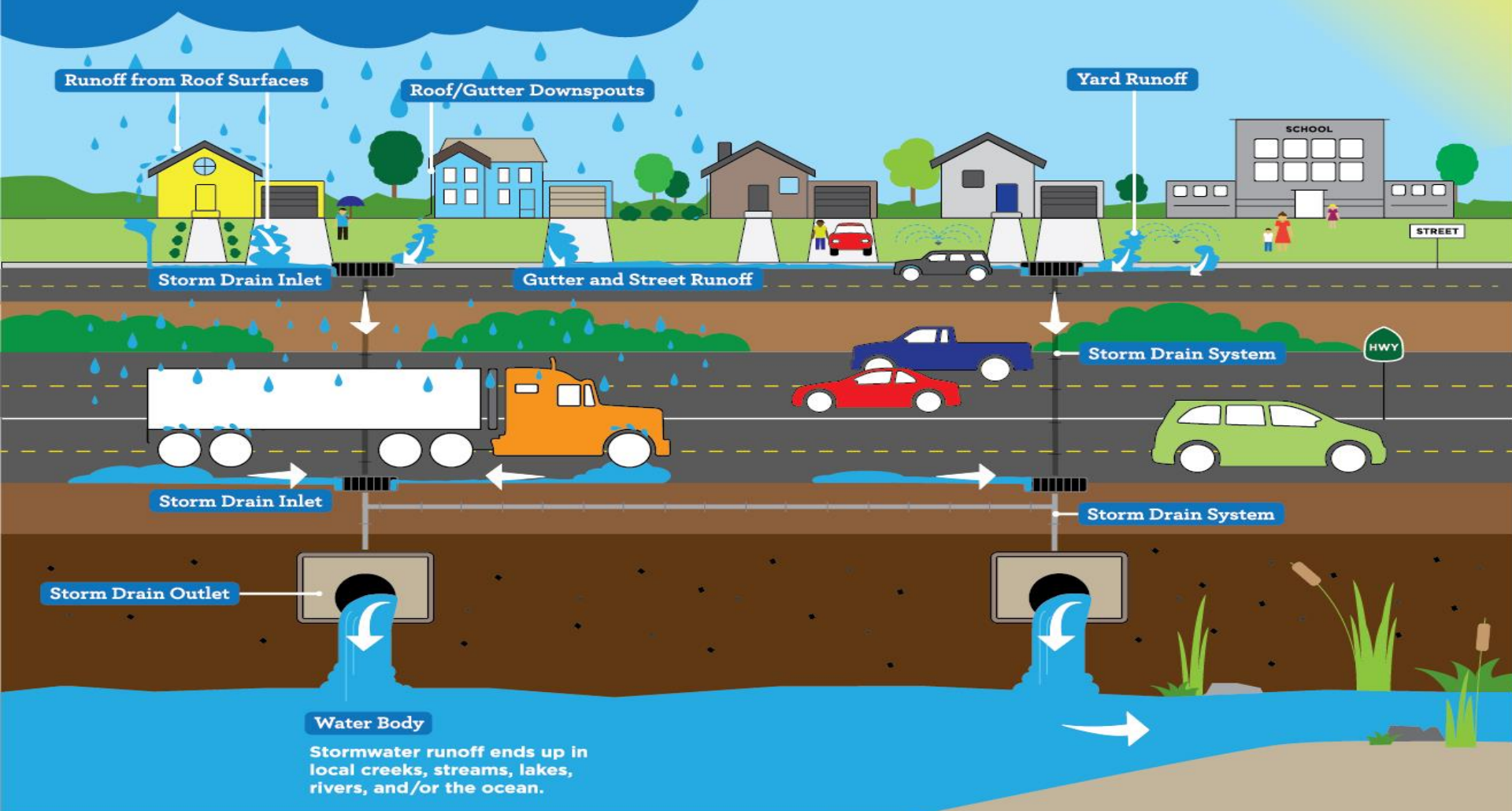
Project Partners

- City of Redondo Beach
- City of Lawndale
- City of El Segundo
- City of Hawthorne
- City of Manhattan Beach
- Caltrans
- Department of Parks and Rec

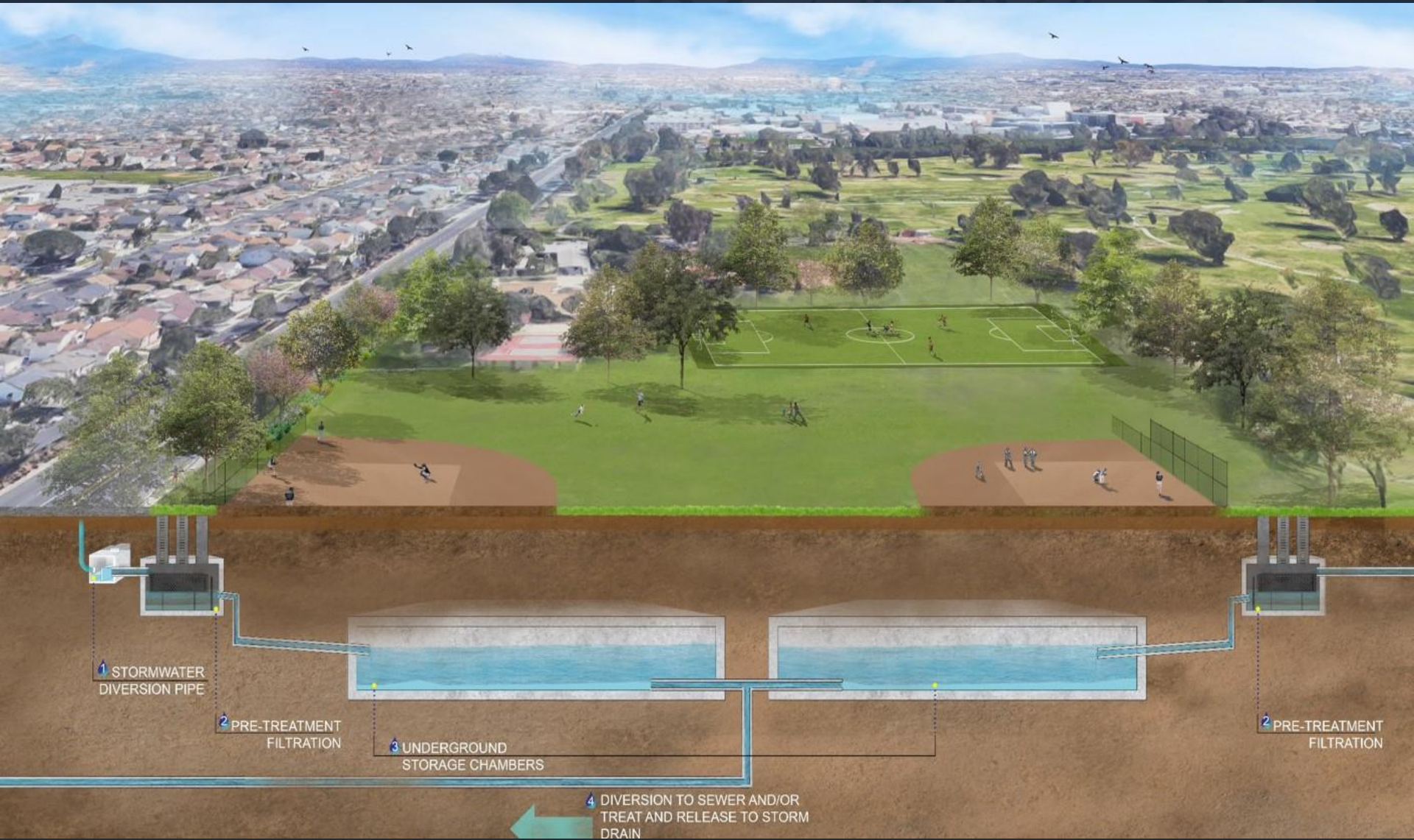


Stormwater Pollutants

Stormwater Runoff



Underground Improvements



Above Ground Improvements

We are here



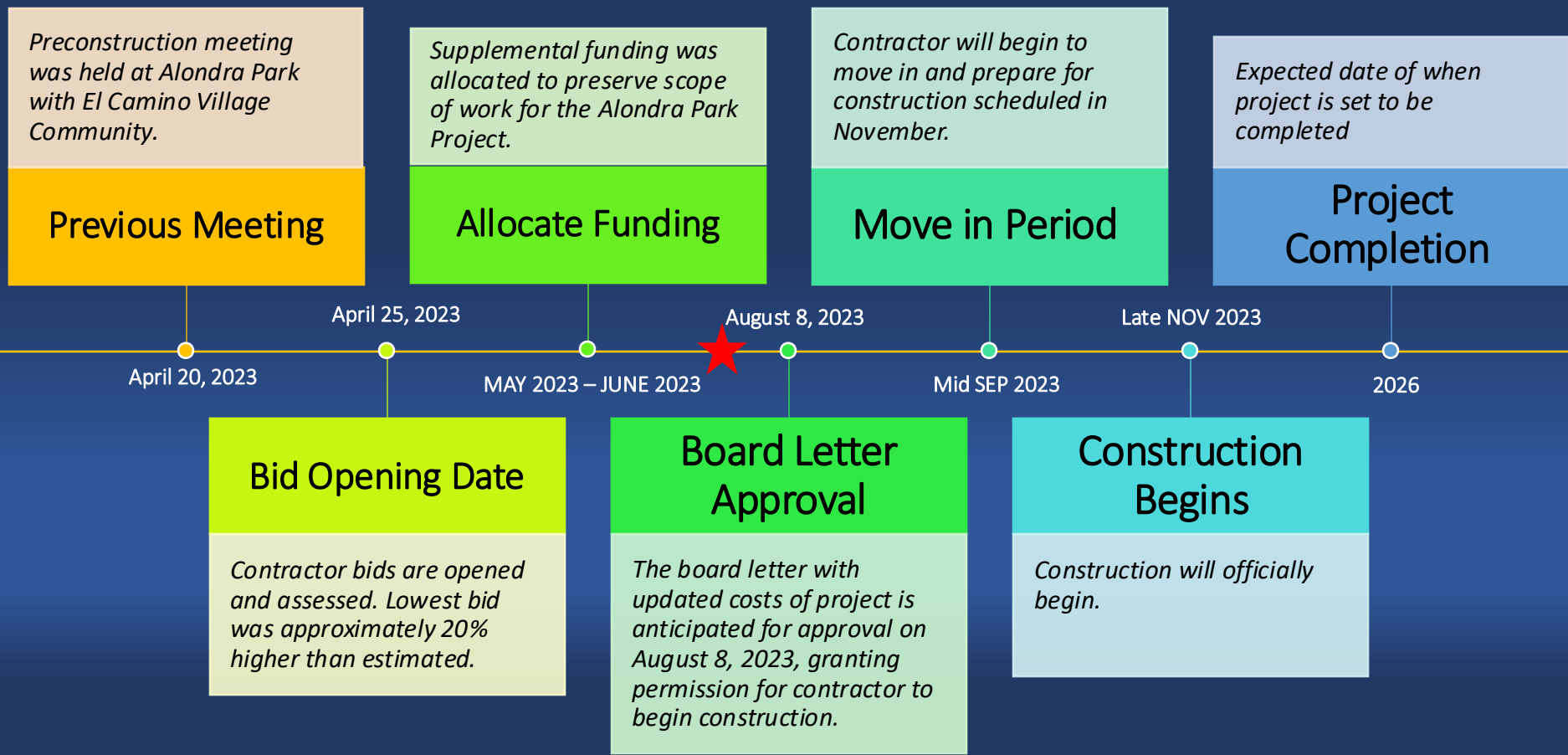
ALONDRA PARK IMPROVEMENTS - MEJORAMIENTOS EN EL PARQUE ALONDRA

MULTI-BENEFIT STORMWATER CAPTURE PROJECT - PROYECTO DE CAPTURA DE AGUAS PLUVIALES DE MÚLTIPLES BENEFICIOS

Potential Projects Limits



Updated Project Schedule



Contractor Information

OHLA USA

“We have built some of the most complex, challenging projects - from coast to coast.”

- Road Improvement Projects
- Building Improvement Projects
- Stormwater Quality Project
 - Machado Lake Ecosystem Rehabilitation



Next Steps

Next Meeting

Tentative date is **October 2023**

- Likely to host standalone event
- Plan to return with construction specific details and contractor information.
 - Construction timeline and milestones
 - Construction impacts
 - Construction schedule



Questions?

Contact Information:

Anthony Vidal
avidal@pw.lacounty.gov
Civil Engineering Assistant
Office: (626) 300-4743

Kara Plourde
kdroz@pw.lacounty.gov
Civil Engineer
Office: (626) 300-4634

Lara Awad
lawad@pw.lacounty.gov
Associate Civil Engineer
Office: (626) 300-4647

Link to Project Site:

